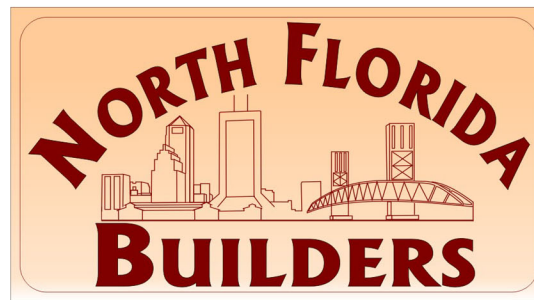


# The Madeira

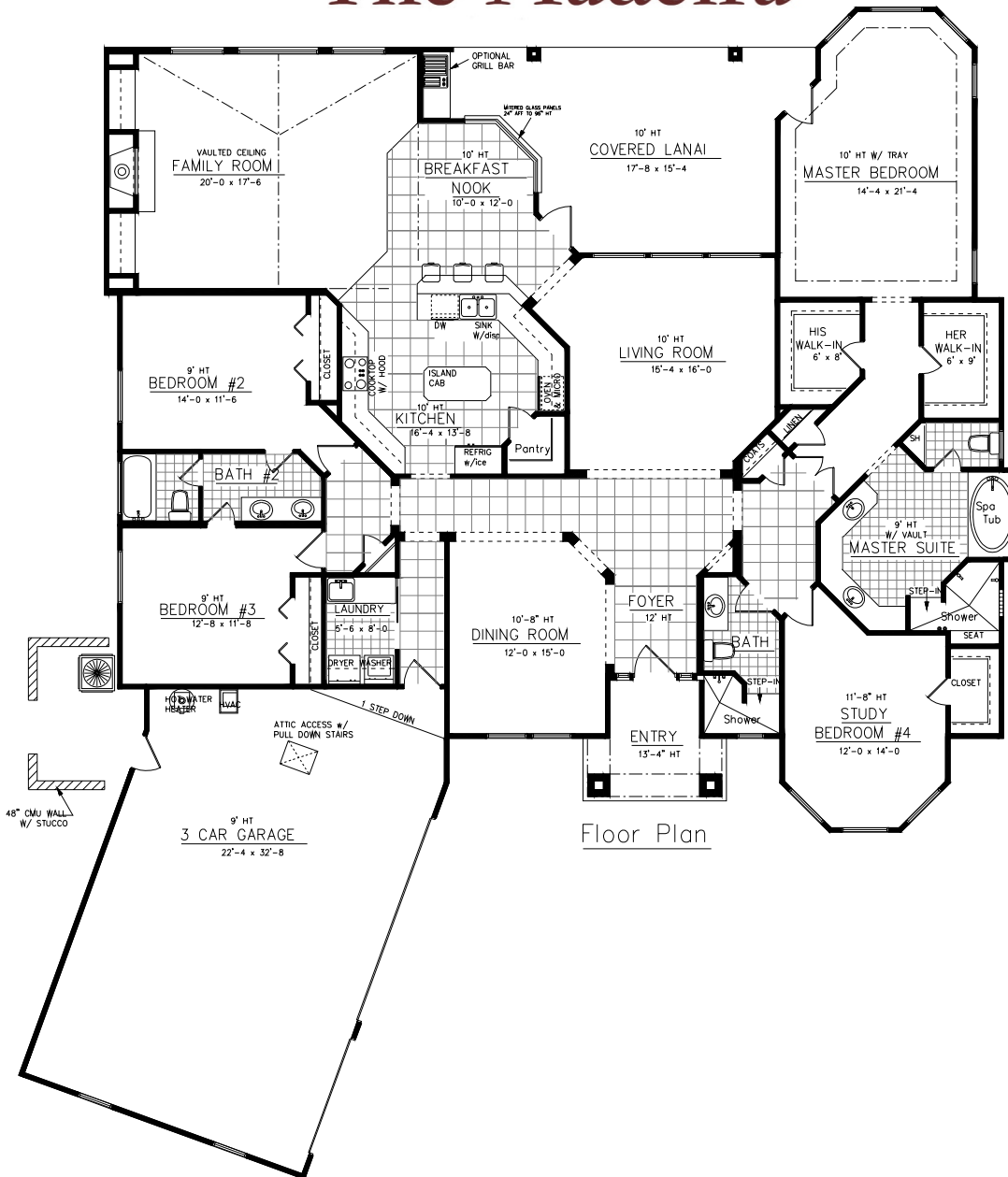


CUSTOM HOMES & CUSTOM REMODELING

904-233-5458

[www.northfloridabuildersinc.com](http://www.northfloridabuildersinc.com)

# The Madeira



Floor Plan

Cond. Sq. Ftg.:	3084 sf
Garage:	786 sf
Lanai:	326 sf
Entry:	71 sf
<b>TOTAL UNDER ROOF:</b>	<b>4267 sf</b>



CRC1329126

Seller reserves the right to make changes or modifications to plans, maps, plan specifications, materials, features, and colors without notice. Prices are subject to change without notice. Maps, plans, landscaping and elevation renderings are artist's conceptions, are not to scale, and may not accurately depict the homes or lots as they are built. These illustrations may depict options and features that are not standard on all models. Optional features may be included at additional cost and are subject to construction cut-off dates. All references to square footage are approximate and may vary with elevations. Lot fencing and walls may not be included in the purchase, and if included, will vary according to size and location of the lot. Exterior treatments, window locations, and room configurations may vary with elevation. Model home interior decorating, landscaping, fencing, and other amenities are for display purposes only. This brochure is for illustrative purposes only and is not a part of a legal contract.