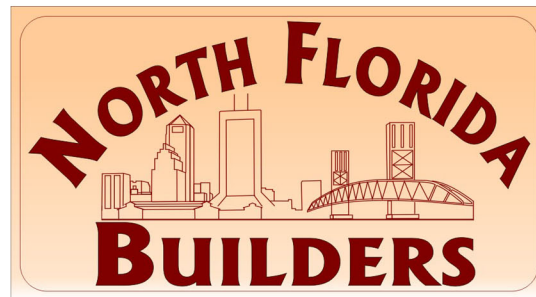
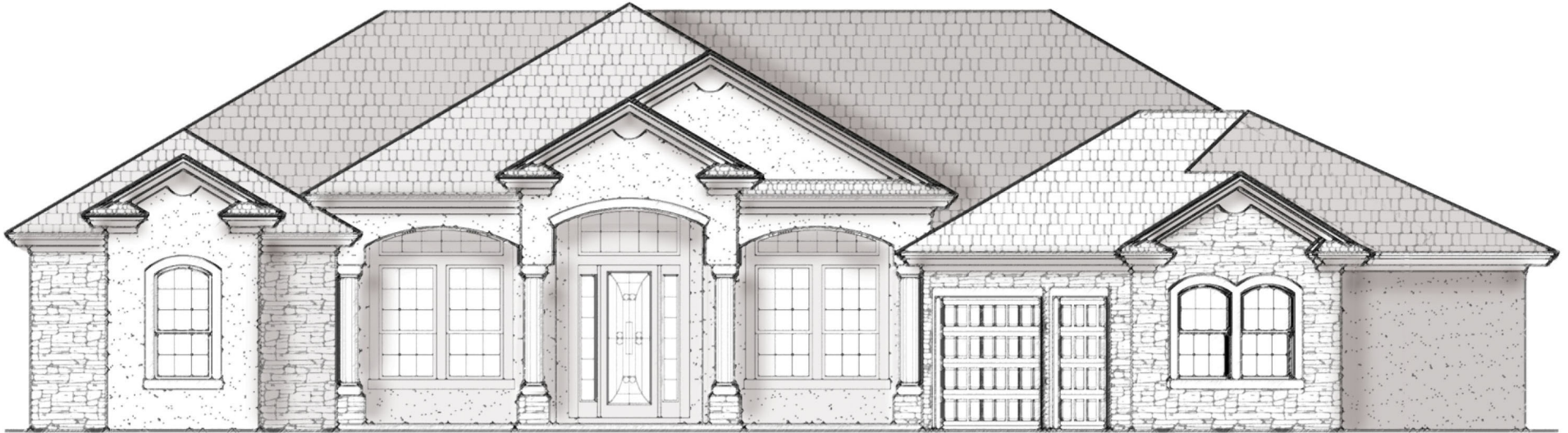


# The Del Mar II

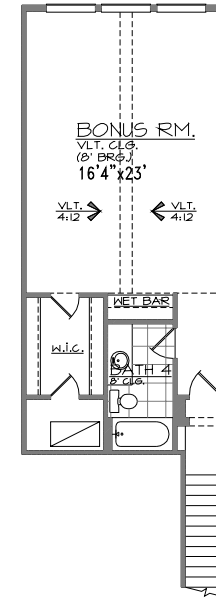
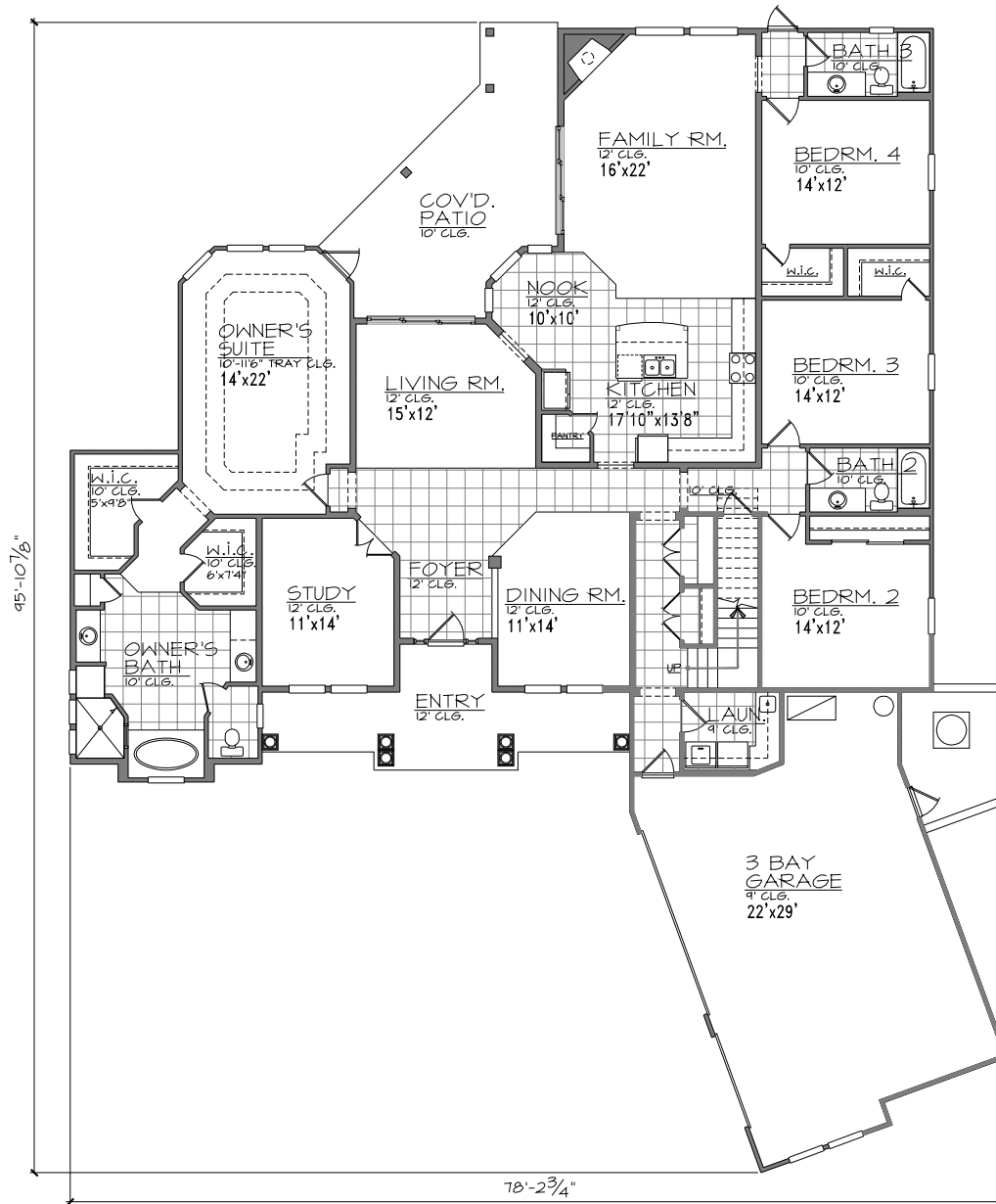


CUSTOM HOMES & CUSTOM REMODELING

904-233-5458

[www.northfloridabuildersinc.com](http://www.northfloridabuildersinc.com)

# The Del Mar II



## Area Tabulations

Living:	
1st floor:	3177 sf
2nd floor:	630 sf
Total Living:	3807 sf
entry:	202 sf
patio:	287 sf
garage:	751 sf
other:	n/a sf
Total Area:	5047 sf



CRC1329126

Seller reserves the right to make changes or modifications to plans, maps, plan specifications, materials, features, and colors without notice. Prices are subject to change without notice. Maps, plans, landscaping and elevation renderings are artist's conceptions, are not to scale, and may not accurately depict the homes or lots as they are built. These illustrations may depict options and features that are not standard on all models. Optional features may be included at additional cost and are subject to construction cut-off dates. All references to square footage are approximate and may vary with elevations. Lot fencing and walls may not be included in the purchase, and if included, will vary according to size and location of the lot. Exterior treatments, window locations, and room configurations may vary with elevation. Model home interior decorating, landscaping, fencing, and other amenities are for display purposes only. This brochure is for illustrative purposes only and is not a part of a legal contract.